

TECHNICAL SPECIFICATION



Sonis®1 Ear Defenders

Dark Grey / Green / AEB010-0AY-800



DESCRIPTION

The Sonis® range has been stylishly designed with a traffic light colour code for easy identification. Materials have been chosen for both performance and comfort over extended periods of use, with careful design ensuring a small number of key components for easy maintenance.

Sonis®1 ear defenders offer low attenuation.

OPTIONS

Dark Grey / Green (AEB010-0AY-800)
Extra Visibility Green (AEB010-0B1-B00)
White / Green (AEB010-0A1-R01)

SAFETY STANDARDS

EN 352-1



JSP Limited, Worsham Mill, Minster Lovell, Oxford OX29 0TA, England.


Tel: +44 (0)1993 826050 / Fax: +44 (0)1993 824411 / Email: sales@jsp-safety.com / Web: www.jsp-safety.com

Do Not Publish without written permission from JSP Limited. Contact copyright@jsp-safety.com. Information correct in the United Kingdom at date of issue and may be subject to change. Any third-party machine and automated translations processed by users may have inaccuracies and should not be relied upon.

Page 1 of 3 / Issued 11 Nov 2024 / Copyright 2018 - 2024, JSP Limited. All Rights Reserved.



SPECIFICATIONS

	Mounting Headband		SNR 27 dB
	Cup Material ABS		Head Band Material TPE
	Adjustable Yes		Hygiene Hygiene Kits
	BSI Kitemark Yes		JSPCheck Yes
	Recyclable Yes		Product Weight 213g

FEATURES



Performance

The Sonis® range of ear defenders have been designed by the JSP R&D team. Working with a leading UK acoustic engineering research facility, they have developed an ear defender range that peaks at an unbeaten 37 SNR.



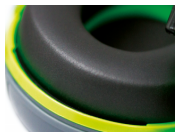
Customisation

Sonis® cups can be coloured to meet a corporate identity. They can also be printed with a company logo for improved brand recognition and to discourage theft. MOQ's apply.



Hygienic

The headband is manufactured from TPE, making it easy to wipe clean. The sealing rings are easy to replace. Hygiene kits are available for each model.



Comfort

The over-moulded headband has a built-in comfort area with ventilation. The headband force and the cushion surface area work together to provide optimum cushion pressure and comfort.



Adjustable Steel Arms

To facilitate even distribution of pressure the wearer can tilt and adjust the position of the earcup for optimum comfort and fit.



Extra Visibility option

The Sonis® range is available with extra visibility cups and a reflective head band for added low light protection.

APPLICATIONS

General guidance only and should not be considered a substitute for a full risk assessment

Aerospace

Agricultural

Airports

Construction and Infrastructure

Facilities Management

Food and Drink Manufacturing

Forestry & Landscaping

Hospitals, Healthcare & Pharmaceuticals

Law Enforcement

Manufacturing

Maritime

Mining, Aggregates and Quarrying

Oil, Gas and Chemical Companies

Rail and Tunnelling

Renewable, Wind and Solar Energy

Scaffolding and Roofing

Sole Trader

Utilities Contractors

Welding

LOGO



Sides

RANGE



JSP Limited. Worsham Mill. Minster Lovell. Oxford OX29 0TA. England.

Tel: +44 (0)1993 826050 / Fax: +44 (0)1993 824411 / Email: sales@jspsafety.com / Web: www.jspsafety.com

Do Not Publish without written permission from JSP Limited. Contact copyright@jspsafety.com. Information correct in the United Kingdom at date of issue and may be subject to change. Any third-party machine and automated translations processed by users may have inaccuracies and should not be relied upon.

Page 2 of 3 / Issued 11 Nov 2024 / Copyright 2018 - 2024. JSP Limited. All Rights Reserved.



VIDEOS

- ▶ www.youtube.com/watch?v=lwV07zfa1Z4
- ▶ www.youtube.com/watch?v=AycQ2vqifWE

DOWNLOADS

-  [Image Pack \(ZIP\)](#)
-  [doc-sonis1-over-the-head-ear-muff.pdf \(PDF\)](#)

